

ELEVATED WALKWAY CONSISTS OF

- 7 - 30'-0" STEEL BEAM RAMP SPANS ----- SPECIAL DESIGN
- 2 - 8'-6" STEEL BEAM RAMP SPANS ----- SPECIAL DESIGN
- 1 - 3'-0" END BENT SLAB ----- SPECIAL DESIGN
- 9 - 5'-0" CONCRETE COLUMN/STEEL BEAM INTERMEDIATE BENTS --- SPECIAL DESIGN
- 1 - 7'-0" CONCRETE COLUMN/STEEL BEAM END BENT ----- SPECIAL DESIGN
- 42" METAL SAFETY RAIL ----- SPECIAL DESIGN

STAIRS CONSISTS OF

- 1 - 32'-0" LONG STEEL STAIRS ----- SPECIAL DESIGN
- 1 - 5'-0" CONCRETE COLUMN/STEEL BEAM INTERMEDIATE BENT ---- SPECIAL DESIGN
- 42" METAL SAFETY RAIL ----- SPECIAL DESIGN

GEOTECHNICAL NOTES

SPREAD FOOTING FOUNDATION BEARING STRESSES

ELEVATED WALKWAY:		(PER BFI REPORT)	
BENTS	SERVICE I LIMIT STATE	STRENGTH V LIMIT STATE	AVAILABLE FACTORED BEARING RESISTANCE
1	2.1 KSF	2.7 KSF	19.7 KSF
2 - 9	9.0 KSF	11.8 KSF	32.7 KSF
10	8.8 KSF	11.3 KSF	37.3 KSF

METAL STAIRS:		AVAILABLE FACTORED BEARING RESISTANCE	
LANDING BENT	SERVICE I LIMIT STATE	STRENGTH V LIMIT STATE	AVAILABLE FACTORED BEARING RESISTANCE
	5.2 KSF	6.8 KSF	32.7 KSF

NOTES:

- SERVICE I LIMIT STATE AND STRENGTH V LIMIT STATE ARE THE CONTROLLING LIMIT STATES FOR BEARING STRESSES AND HAVE THE 55 MPH WIND LOAD.
- THE ABOVE VALUES ARE VALID FOR PWR OR DENSE SILTY SAND WITH AN SPT VALUE OF 30 BLOWS PER FOOT OR GREATER.
- THE GEOTECHNICAL ENGINEER SHALL INSPECT THE STAIRS FOOTING EXCAVATIONS IMMEDIATELY FOLLOWING REMOVAL OF THE RUBBLE DEBRIS AND EXISTING CONCRETE SLAB. UNSUITABLE FILL MATERIALS SHALL BE UNDERCUT AND REPLACED WITH COMPACTED NO. 57 STONE TO ACHIEVE ADEQUATE FOUNDATION BEARING, AS DIRECTED BY THE GEOTECHNICAL ENGINEER.

GENERAL NOTES

- SPECIFICATIONS - GEORGIA STANDARD SPECIFICATIONS, 2013 EDITION, AND 2016 SUPPLEMENTAL SPECIFICATIONS AS MODIFIED BY CONTRACT DOCUMENTS.
- REINFORCING STEEL - PLACE AND TIE ALL REINFORCING STEEL IN ACCORDANCE WITH THE GEORGIA DOT SPECIFICATIONS. DO NOT WELD REINFORCING STEEL. MAINTAIN 2" MINIMUM CLEARANCE ON ALL REINFORCEMENT UNLESS OTHERWISE NOTED.
- CHAMFER - CHAMFER ALL EXPOSED CONCRETE EDGES 3/4" UNLESS OTHERWISE NOTED.
- WAITING PERIOD - NONE REQUIRED.
- FOOTING ELEVATIONS - DO NOT LOWER FOOTING ELEVATIONS, AS SHOWN ON THE PLANS, MORE THAN 3'-0" WITHOUT THE APPROVAL OF THE STATE BRIDGE ENGINEER.
- CHARPY V-NOTCH TEST - ALL W-BEAMS (EXCEPT THE DIAPHRAGMS) AND CHANNELS ARE MAIN LOAD-CARRYING MEMBERS SUBJECT TO TENSILE STRESS AND SHALL MEET THE CHARPY V-NOTCH TEST REQUIREMENTS AS SPECIFIED BY SECTION 851 OF THE GEORGIA DOT SPECIFICATIONS.
- WELDING - ALL WELDING ON GEORGIA DOT PROJECTS SHALL BE PERFORMED BY CERTIFIED WELDERS THAT HAVE IN THEIR POSSESSION A CURRENT WELDING CERTIFICATION CARD ISSUED BY THE OFFICE OF MATERIALS AND RESEARCH. USE ONLY E70XX (EXCLUDING E7014 AND E7024) LOW-HYDROGEN ELECTRODES FOR MANUAL SHIELDED METAL ARC WELDING.
- METAL SAFETY RAIL - INCLUDE THE COST OF THE INTEGRALLY-MOUNTED STAINLESS STEEL HANDRAIL IN THE PRICE BID FOR "42 IN METAL SAFETY RAIL".
- PAINT - CLEAN AND PAINT ALL NEW STRUCTURAL STEEL WITH SYSTEM VI AS PER SECTION 535 OF THE GEORGIA DOT SPECIFICATIONS. COLOR OF THE FINAL COAT SHALL BE DECIDED ON AND APPROVED BY THE OWNER. INCLUDE THE COST IN THE PRICE BID FOR "LUMP - STR STEEL".
- ALUMINUM GRATING - INCLUDE THE COST OF ALUMINUM GRATING AND CONNECTIONS IN THE PRICE BID FOR "LUMP - STR STEEL" FOR EACH RESPECTIVE STRUCTURE.

DESIGN DATA

- SPECIFICATIONS ----- AASHTO LRFD 7TH EDITION, 2014
(DESIGNED FOR SEISMIC PERFORMANCE ZONE I, SDI = 0.130)
LRFD GUIDE SPECIFICATIONS FOR THE DESIGN OF PEDESTRIAN BRIDGES
(DEC. 2009 ED. WITH 2015 INTERIMS)
- IBC INTERNATIONAL BUILDING CODE, CURRENT EDITION
AISC STEEL CONSTRUCTION MANUAL, 14TH ED., 2010
ADA STANDARDS FOR ACCESSIBLE DESIGN, 2010
- RAMP LIVE LOAD (MINIMUM) ----- 100 PSF
SUBSTRUCTURE CONCRETE ----- CLASS AA, $f'_c = 3,500$ PSI
REINFORCEMENT STEEL ----- GRADE 60, $f_y = 60,000$ PSI
STRUCTURAL STEEL:
WIDE FLANGES AND MISC CHANNEL ----- ASTM 709 GR 50, $f_y = 50,000$ PSI
OTHER STRUCTURAL STEEL ----- ASTM 709 GR 36, $f_y = 36,000$ PSI
BEARING ANCHOR BOLTS, NUTS, AND WASHERS ----- ASTM A276 TYPE 304
CONNECTION BOLTS ----- ASTM F 3125, GRADE A 325, TYPE 1
CONNECTION NUTS ----- ASTM A563
CONNECTION WASHERS ----- ASTM F436
ALUMINUM GRATING ----- ASTM B-221, 6063-T6

SUMMARY OF QUANTITIES

ELEVATED WALKWAY NO. 1

PAY ITEM NUMBER	QUANTITY	UNIT	PAY ITEM
211 - 0200	153	CY	BRIDGE EXCAVATION, GRADE SEPARATION
500 - 3002	44	CY	CLASS AA CONCRETE
501 - 3000	LUMP	LS	STR STEEL, BR NO 1 - ELEVATED WALKWAY (74910)
511 - 1000	11743	LB	BAR REINF STEEL
515 - 2105	577	LF	42 IN METAL SAFETY RAIL

STAIRS NO. 1

PAY ITEM NUMBER	QUANTITY	UNIT	PAY ITEM
211 - 0200	21	CY	BRIDGE EXCAVATION, GRADE SEPARATION
500 - 3002	6	CY	CLASS AA CONCRETE
501 - 3000	LUMP	LS	STR STEEL, STAIRS NO 1 (8140)
511 - 1000	1334	LB	BAR REINF STEEL
515 - 2105	73	LF	42 IN METAL SAFETY RAIL

ELEVATED WALKWAY NO. 1 AND STAIRS NO. 1

ATLANTA BELTLINE

GENERAL NOTES
PONCE DE LEON AVENUE/ATLANTA
BELTLINE CONNECTION RAMP
FULTON COUNTY 0012586

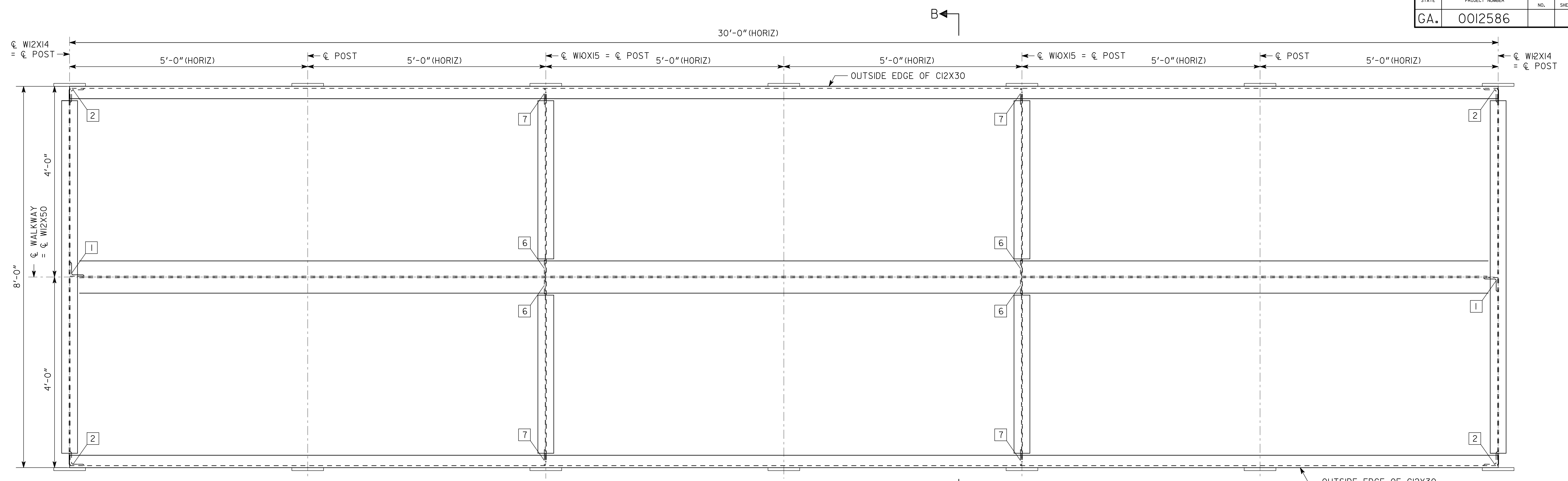
SCALE: NO SCALE JANUARY 2019

	DATE	03-11-20
	REVISIONS	TO ALUMINUM GRATING

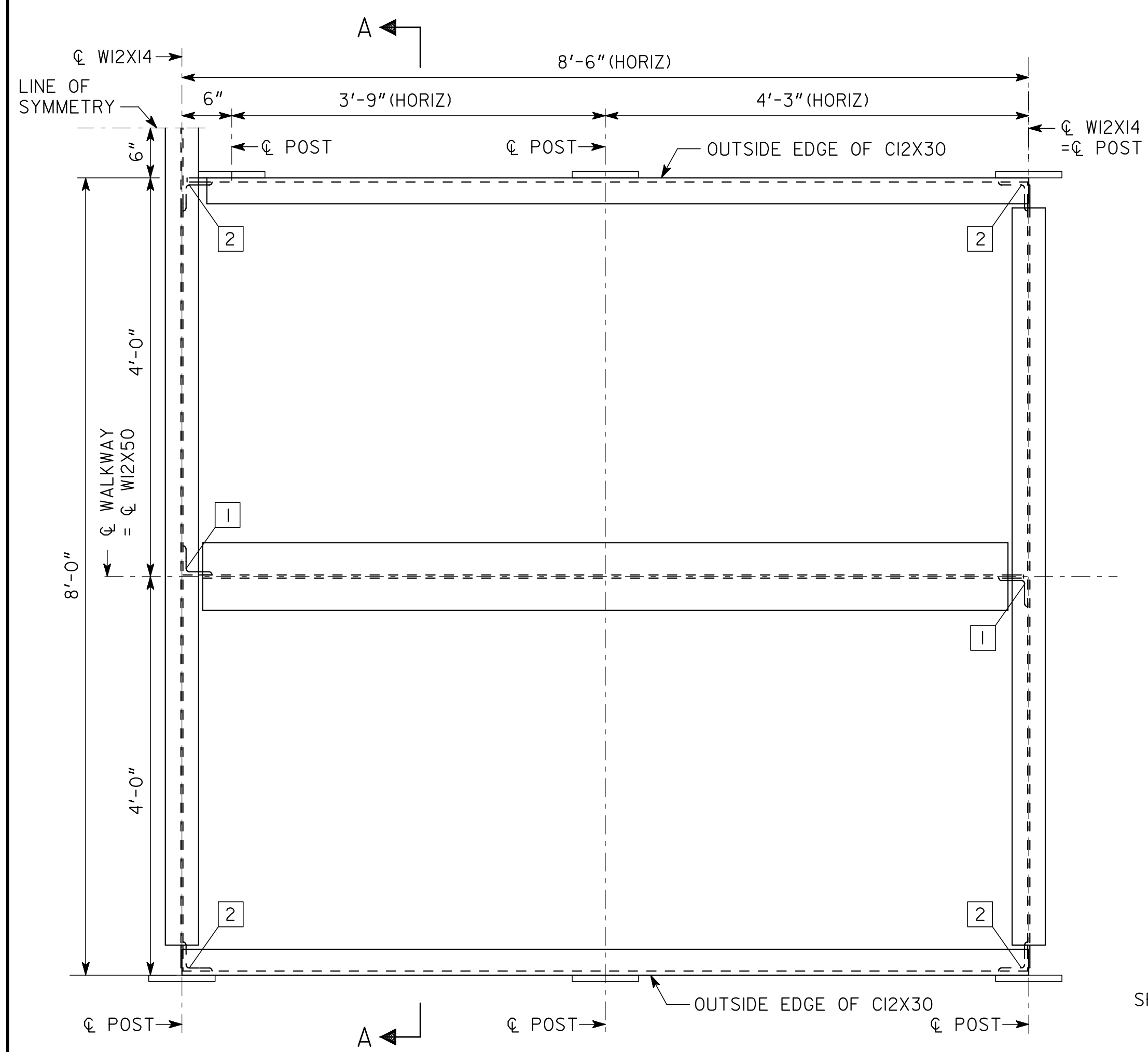
S&A SAstry & ASSOCIATES, INC.
11030 JONES BRIDGE ROAD, SUITE 201
ALPHARETTA, GA 30022
PHONE: 678-366-9375

DRAWING NO. 35 - 0003	DESIGNED AP/UP	CHECKED AS	REVIEWED SKG
BRIDGE SHEET 3 OF 11	DRAWN PS	DESIGN GROUP	APPROVED WMD

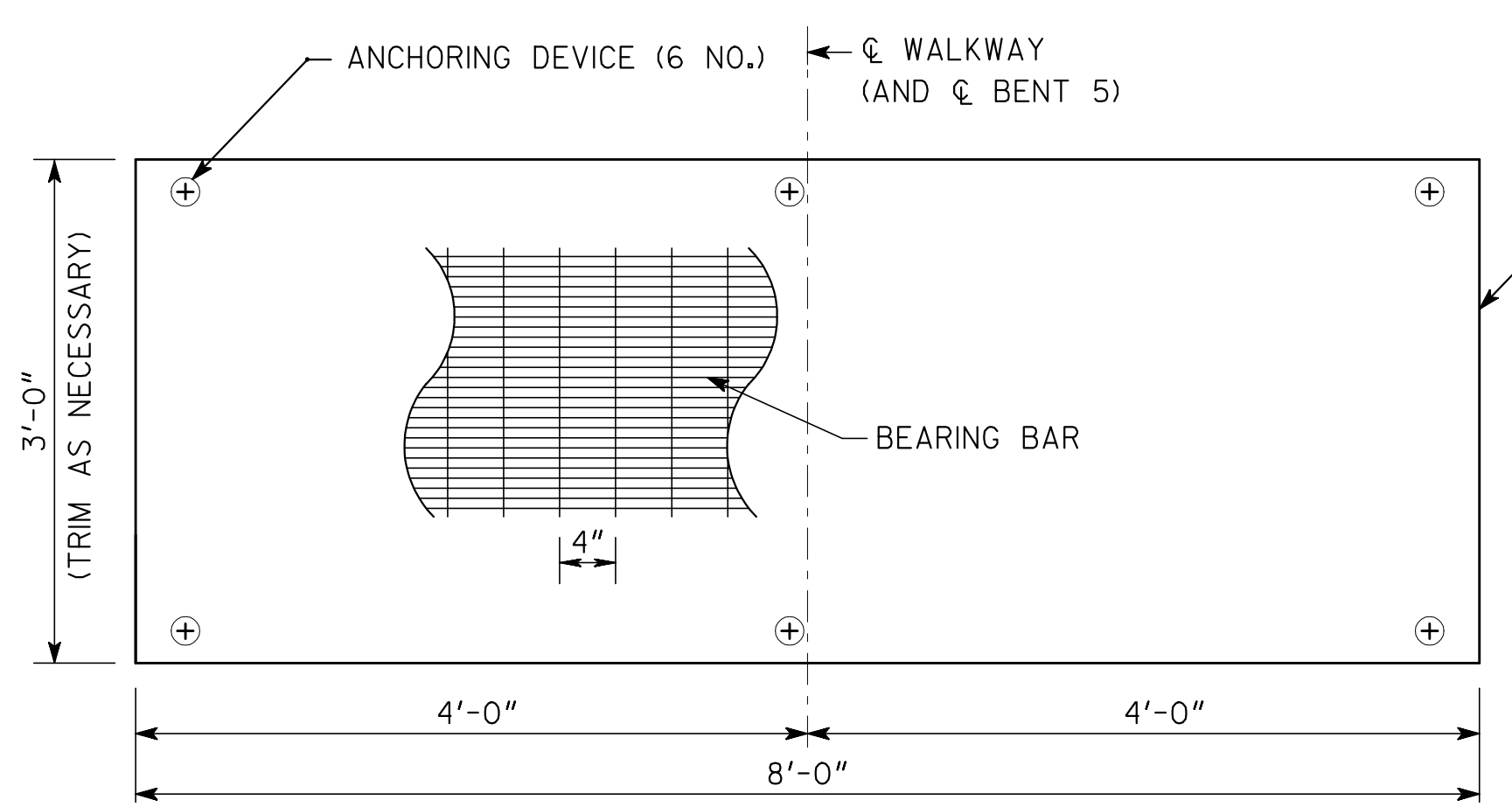
STATE	PROJECT NUMBER	SHEET NO.	TOTAL SHEETS
GA.	0012586		



SPANS 1 THRU 3 AND 6 THRU 9



SPANS 4 AND 5
SPAN 4 SHOWN. SPAN 5 SIMILAR.



TYPICAL ALUMINUM GRATING PANEL

3'x8' PANEL WITH 19-S-4 SPACING, 1" X 0.940" BARS WITH GROOVED SURFACE (NON-SERRATED)

GRATING NOTES:

- ALUMINUM GRATING SHALL BE A SWAGE-LOCKED, T-BAR STYLE, GRATING WITH 19-S-4 SPACING, BAR SIZES SHALL BE 1" X 0.940" WITH A GROOVED SURFACE (NON-SERRATED), OR APPROVED EQUAL. GRATING CONNECTIONS SHALL BE PER MANUFACTURER'S RECOMMENDATION.
- TEFLON ISOLATORS SHALL BE USED TO ISOLATE ALUMINUM GRATINGS FROM STRUCTURAL STEEL SUPPORTING COMPONENTS.

NOTES:

- POSTS ARE LOCATED ON BOTH SIDES OF RAMPS.
- [X] = CONNECTION IDENTIFICATION. SEE CONNECTION DETAILS SHEET.
- ALL MOUNTING PLATES ARE VERTICAL.
- FOR SECTIONS, SEE SHEET 6.

ELEVATED WALKWAY NO. 1 AND STAIRS NO. 1

ATLANTA BELTLINE

FRAMING PLANS - RAMPS
PONCE DE LEON AVENUE/ATLANTA
BELTLINE CONNECTION RAMP
FULTON COUNTY

0012586

SCALE: 1" = 1'-0"

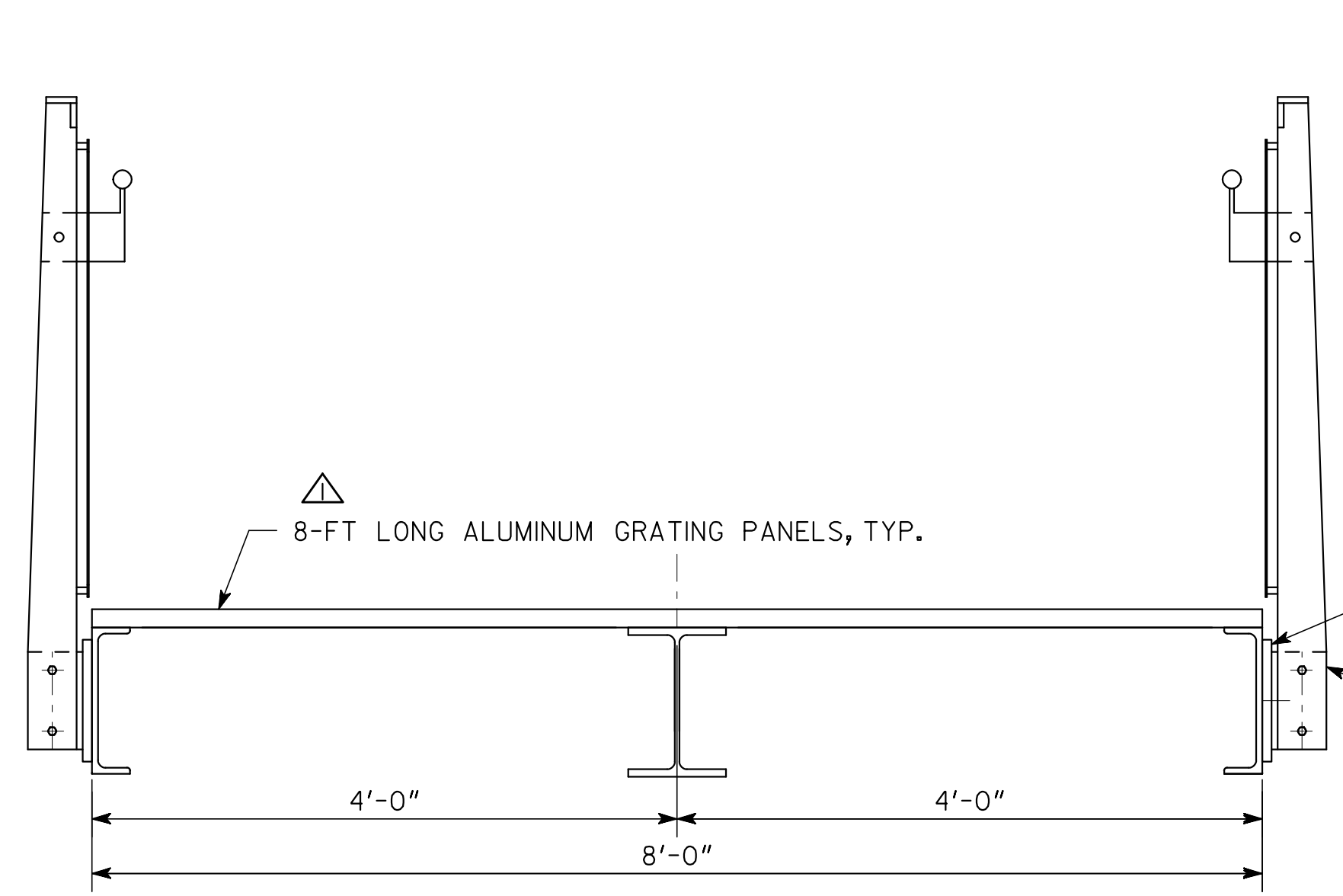
JANUARY 2019

	DATE	03-11-20
	REVISIONS	
BY	AS	TO ALUMINUM GRATING
DRAWING NO.	35 - 0005	
BRIDGE SHEET	5 OF 11	

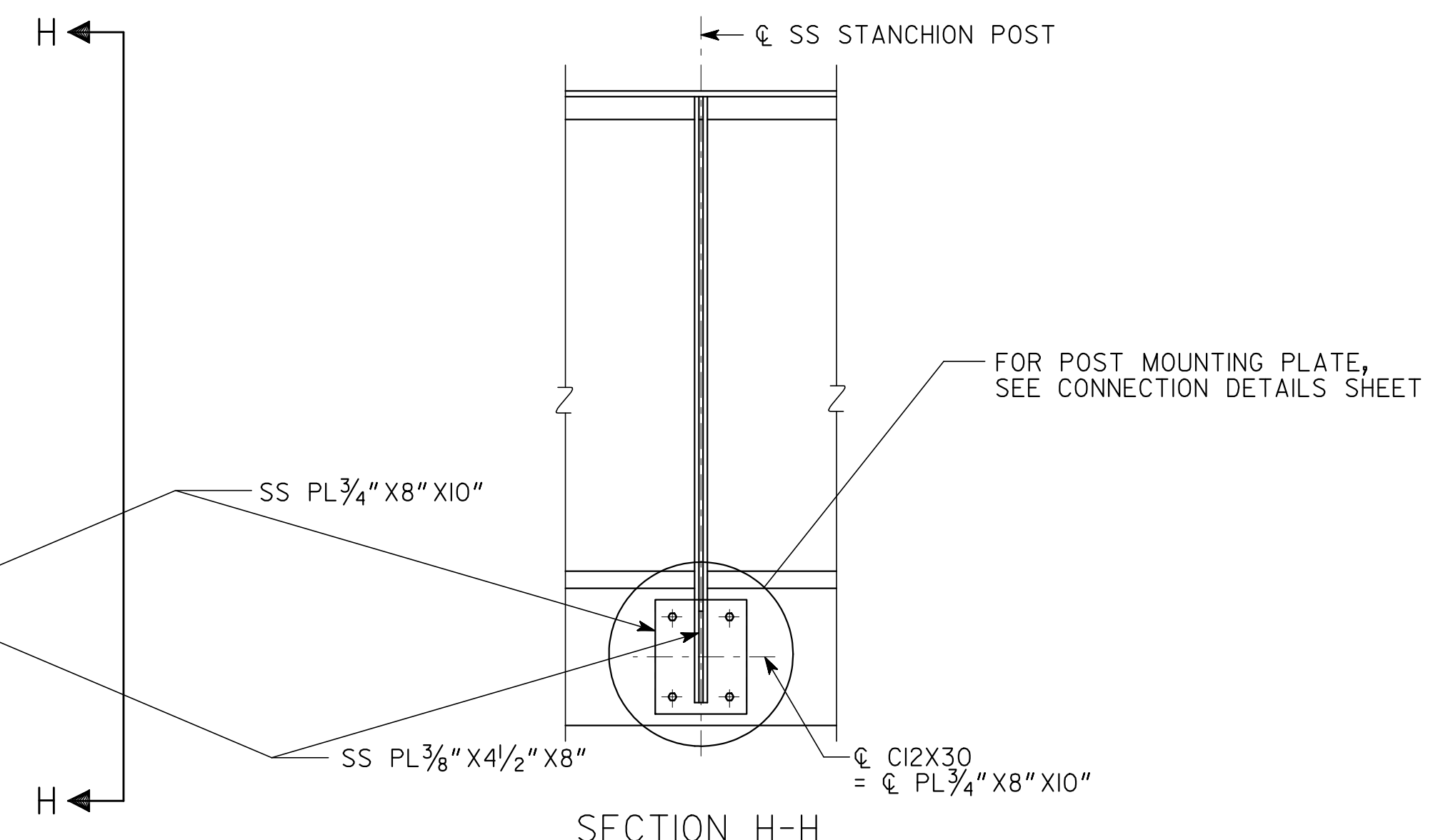
S&A SASTRY & ASSOCIATES, INC.
11030 JONES BRIDGE ROAD, SUITE 201
ALPHARETTA, GA 30022
PHONE: 678-366-9375

DESIGNED	AP/UP	CHECKED	AS	REVIEWED	SKG
DRAWN	PS	DESIGN GROUP		APPROVED	WMD

1 INCH WHEN PRINTED FULL SIZE

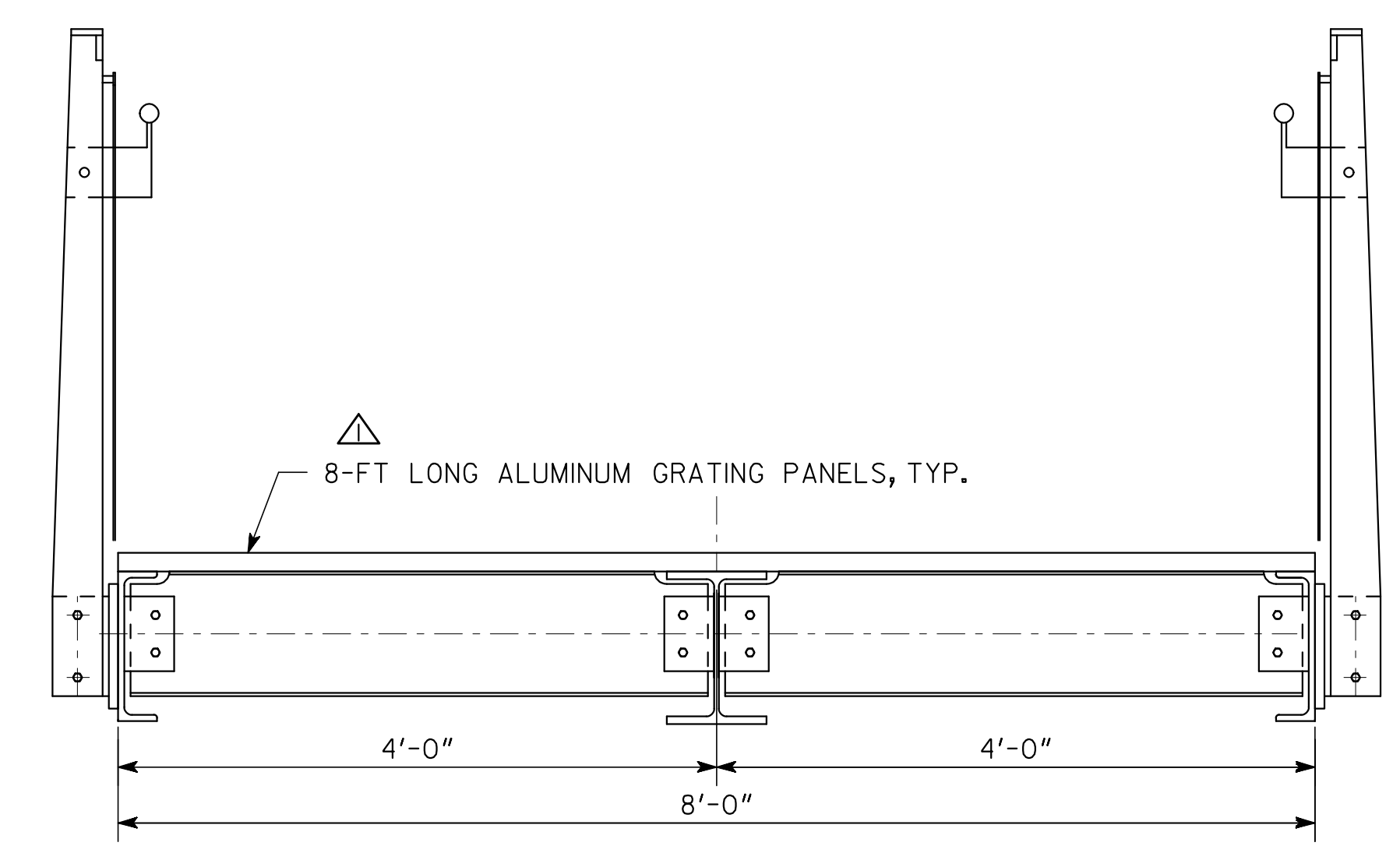


SECTION A-A

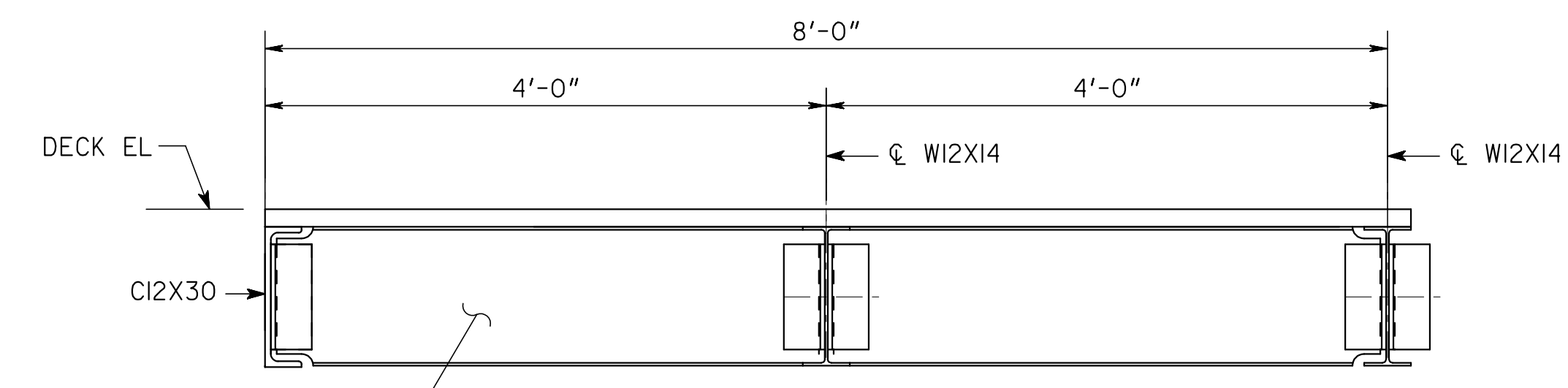


SECTION H-H

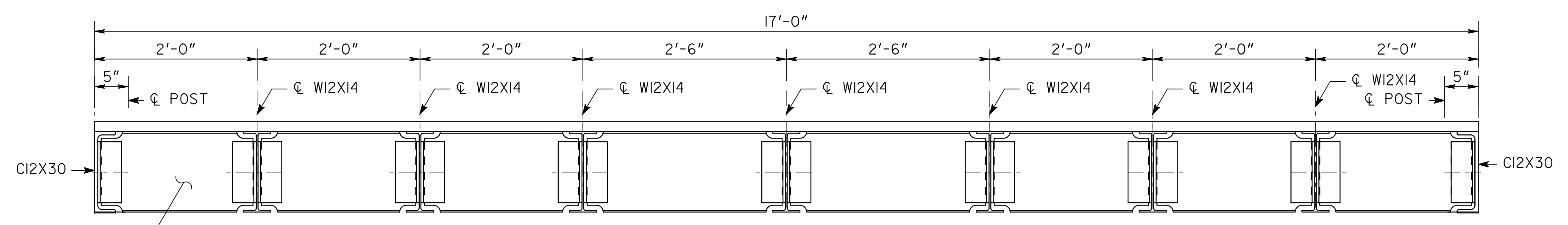
(SEE SHEET 38-001 FOR HANDRAIL AND FENCE DETAILS)



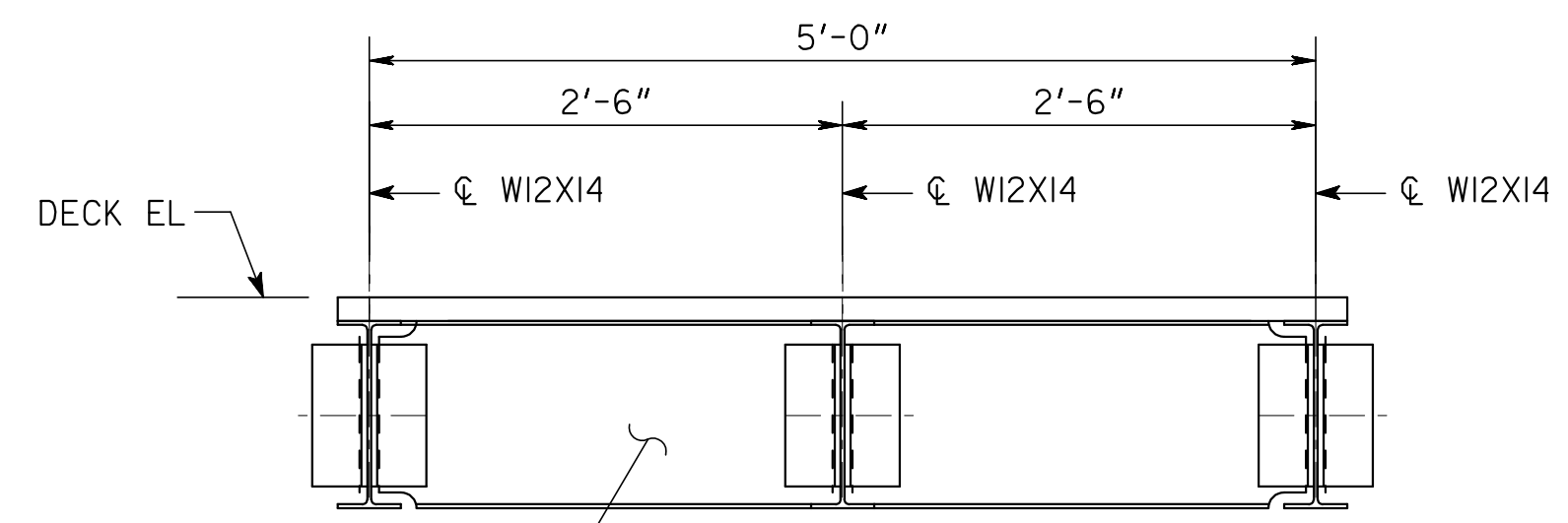
SECTION B-B



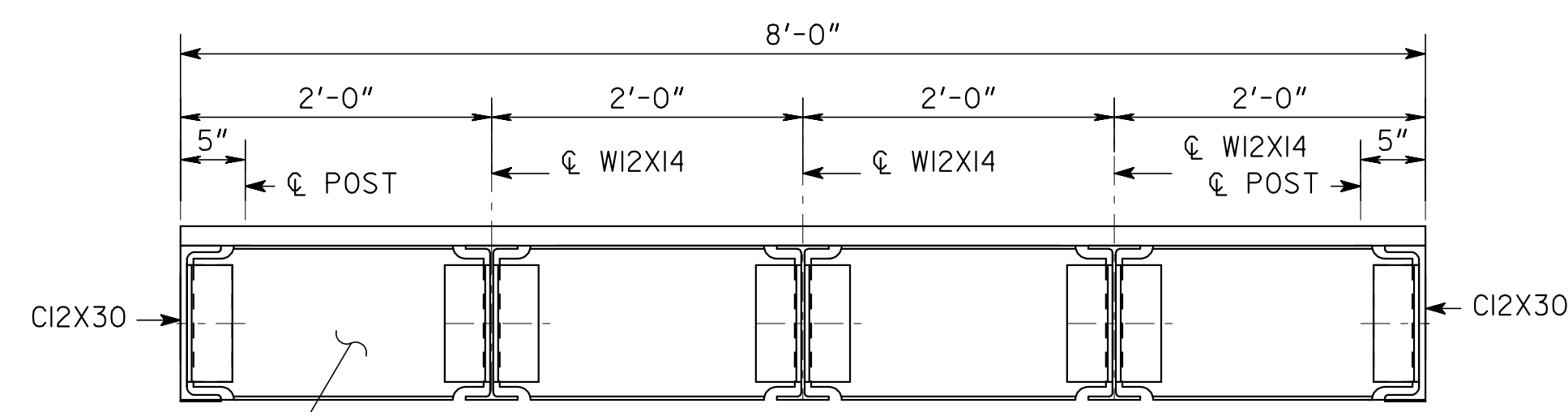
SECTION C-C



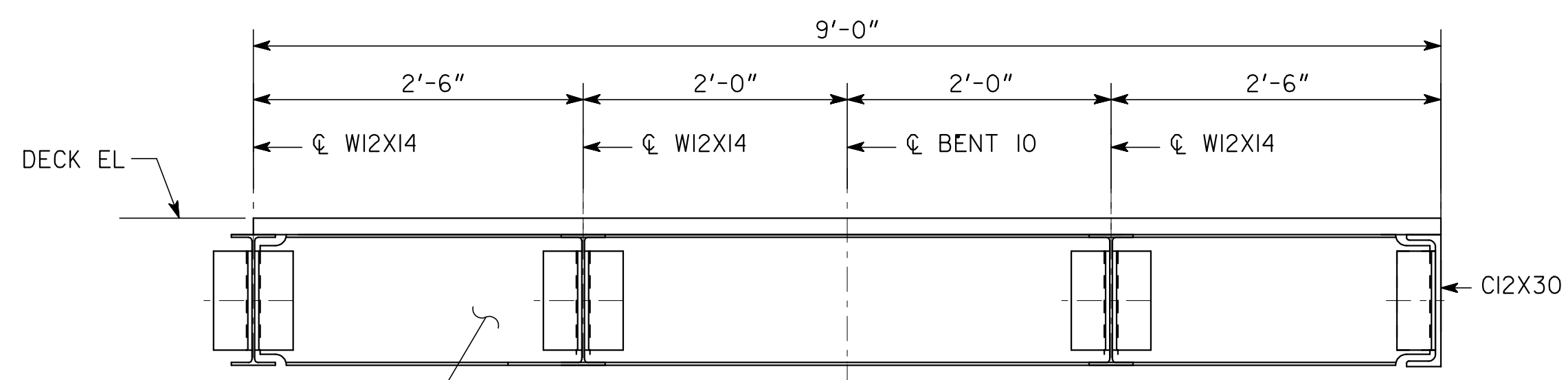
SECTION F-F



SECTION D-D



SECTION G-G



SECTION E-E

ELEVATED WALKWAY NO. 1 AND STAIRS NO. 1

ATLANTA BELTLINE

WALKWAY SECTIONS
PONCE DE LEON AVENUE/ATLANTA
BELTLINE CONNECTION RAMP
FULTON COUNTY 0012586

SCALE: 1" = 1'-0" UNLESS NOTED JANUARY 2019

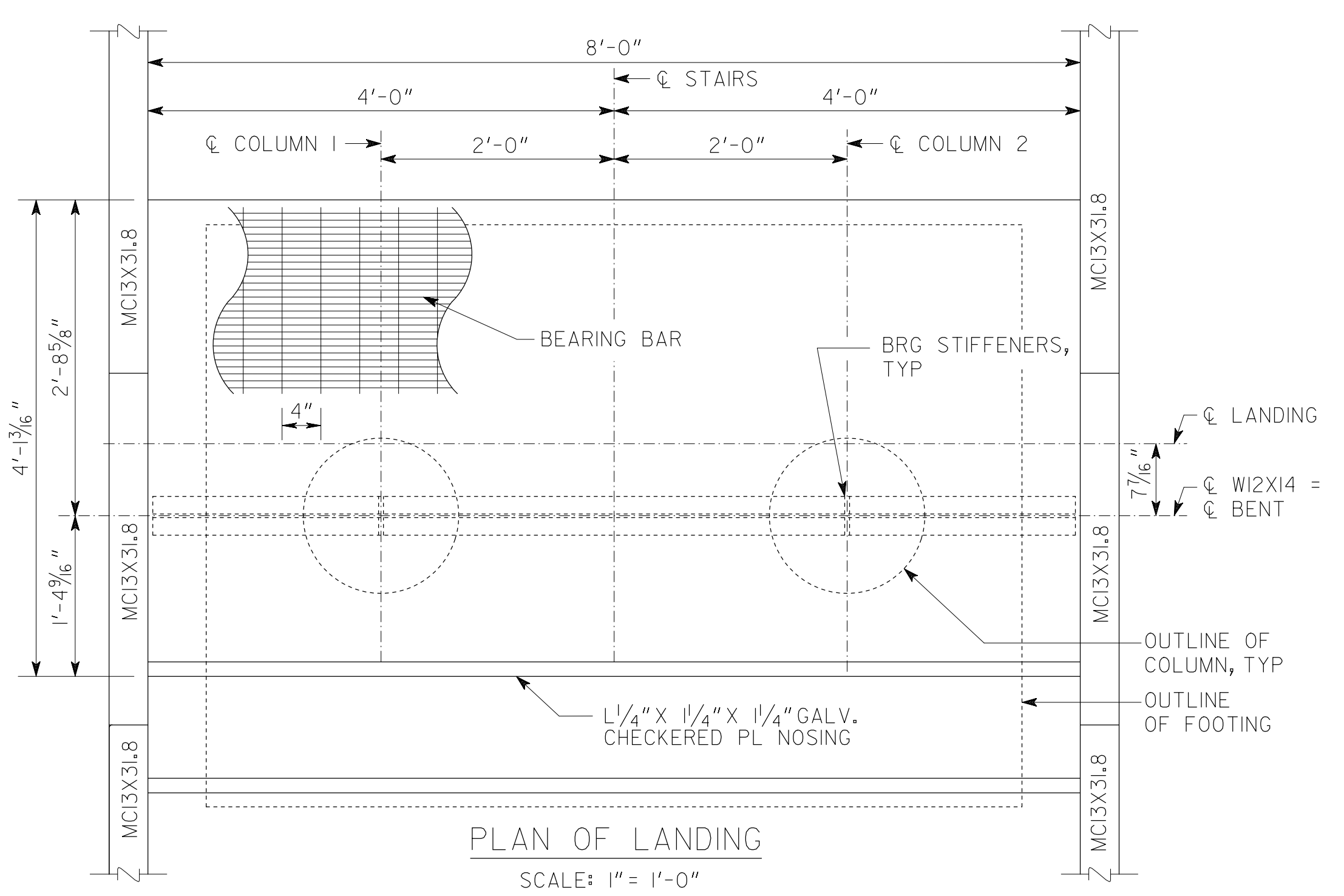
	DATE	03-11-20
	REVISIONS	
BY	AS	TO ALUMINUM GRATING

S & A SASTRY & ASSOCIATES, INC.
11030 JONES BRIDGE ROAD, SUITE 201
ALPHARETTA, GA 30022
PHONE: 678-366-9375

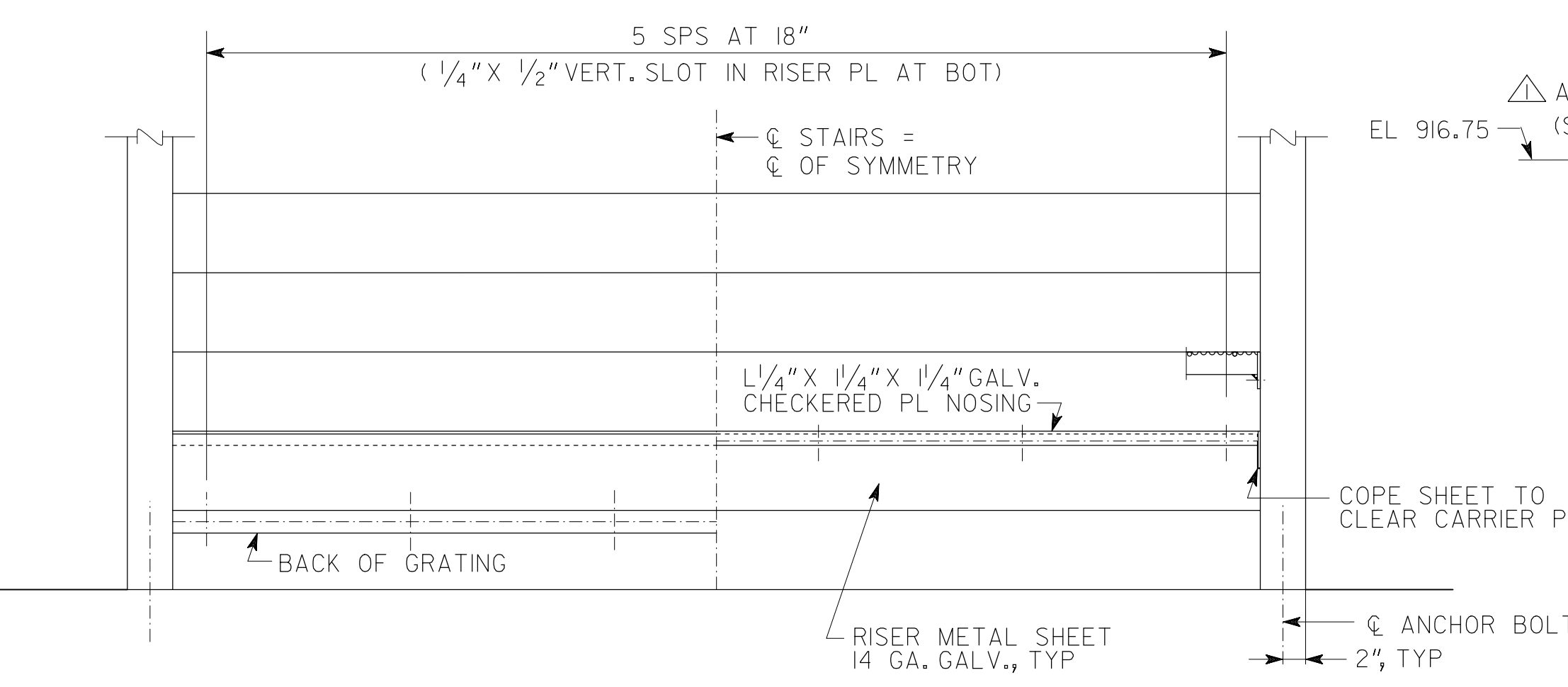
DRAWING NO. 35 - 0006
BRIDGE SHEET 6 OF 11

DESIGNED AP/UP	CHECKED AS	REVIEWED SKG
DRAWN PS	DESIGN GROUP	APPROVED WMD

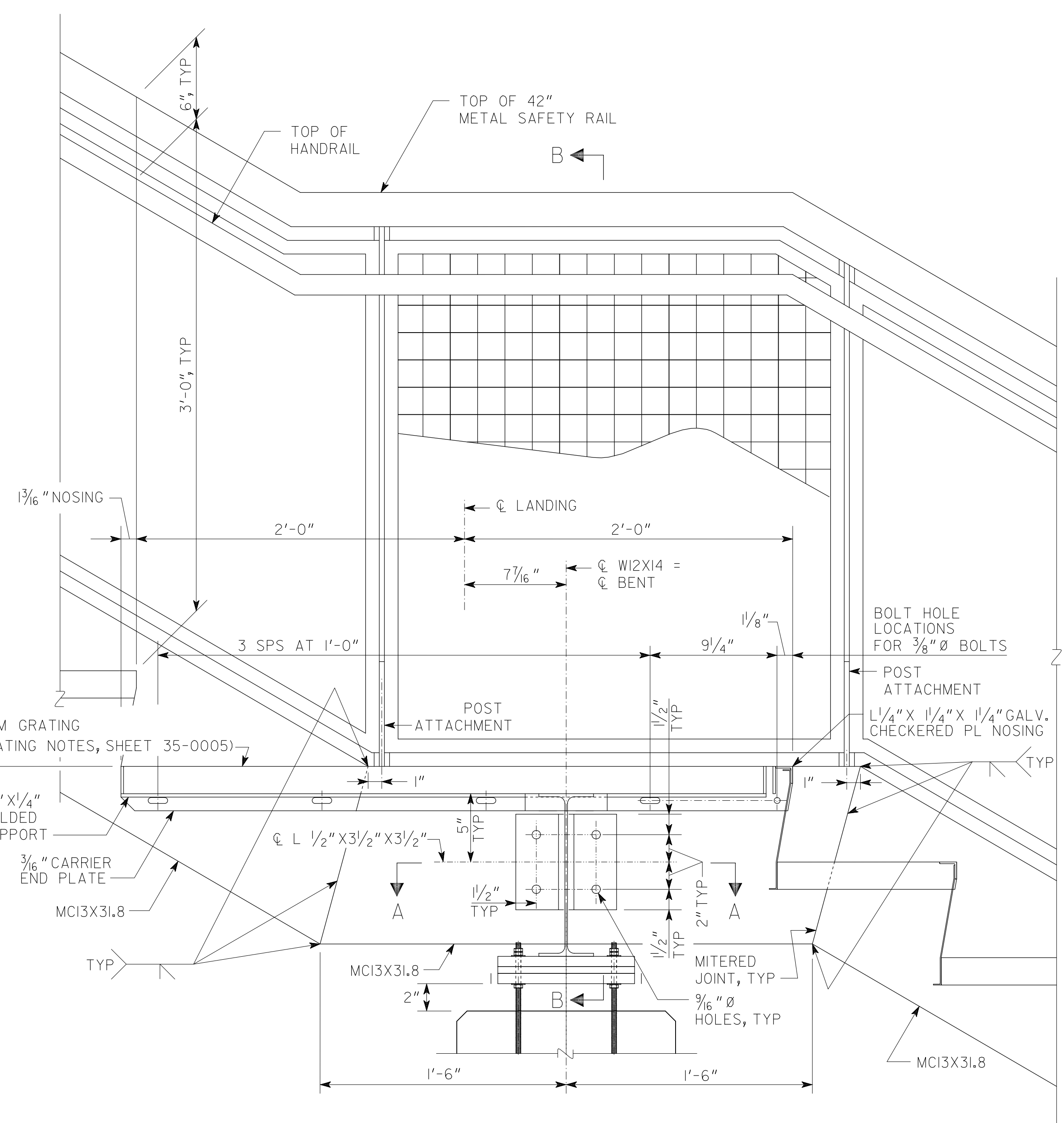
1 INCH WHEN PRINTED FULL SIZE



PLAN OF LANDING
SCALE: 1" = 1'-0"

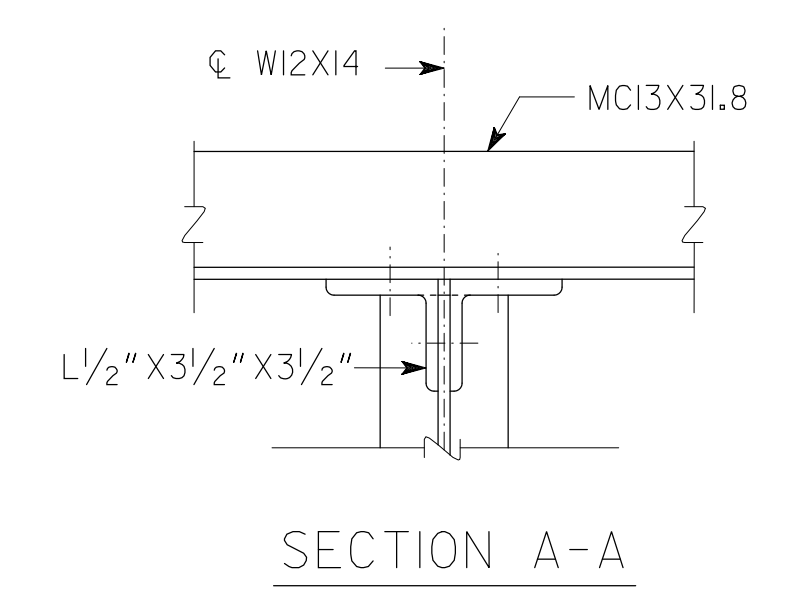


FRONT ELEVATION
SCALE: 1" = 1'-0"

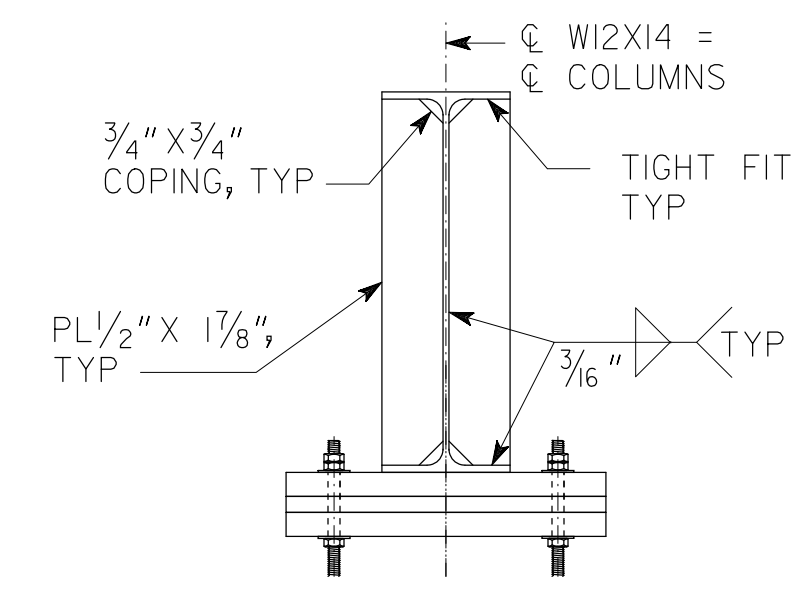


LANDING DETAILS

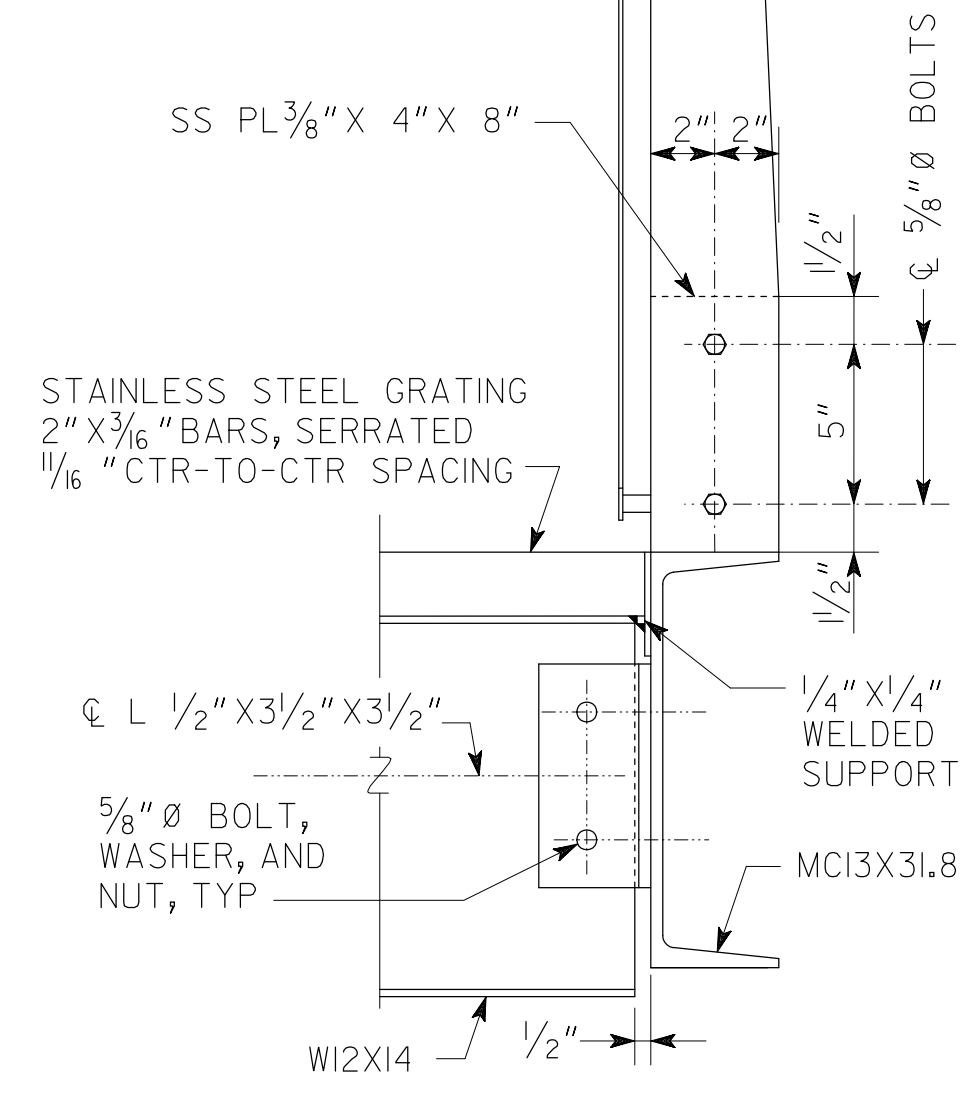
FOR STAINLESS STEEL RAILING, SEE SHEET 38-001
FOR BEARING ASSEMBLY, SEE BEARING ASSEMBLY DETAILS SHEET



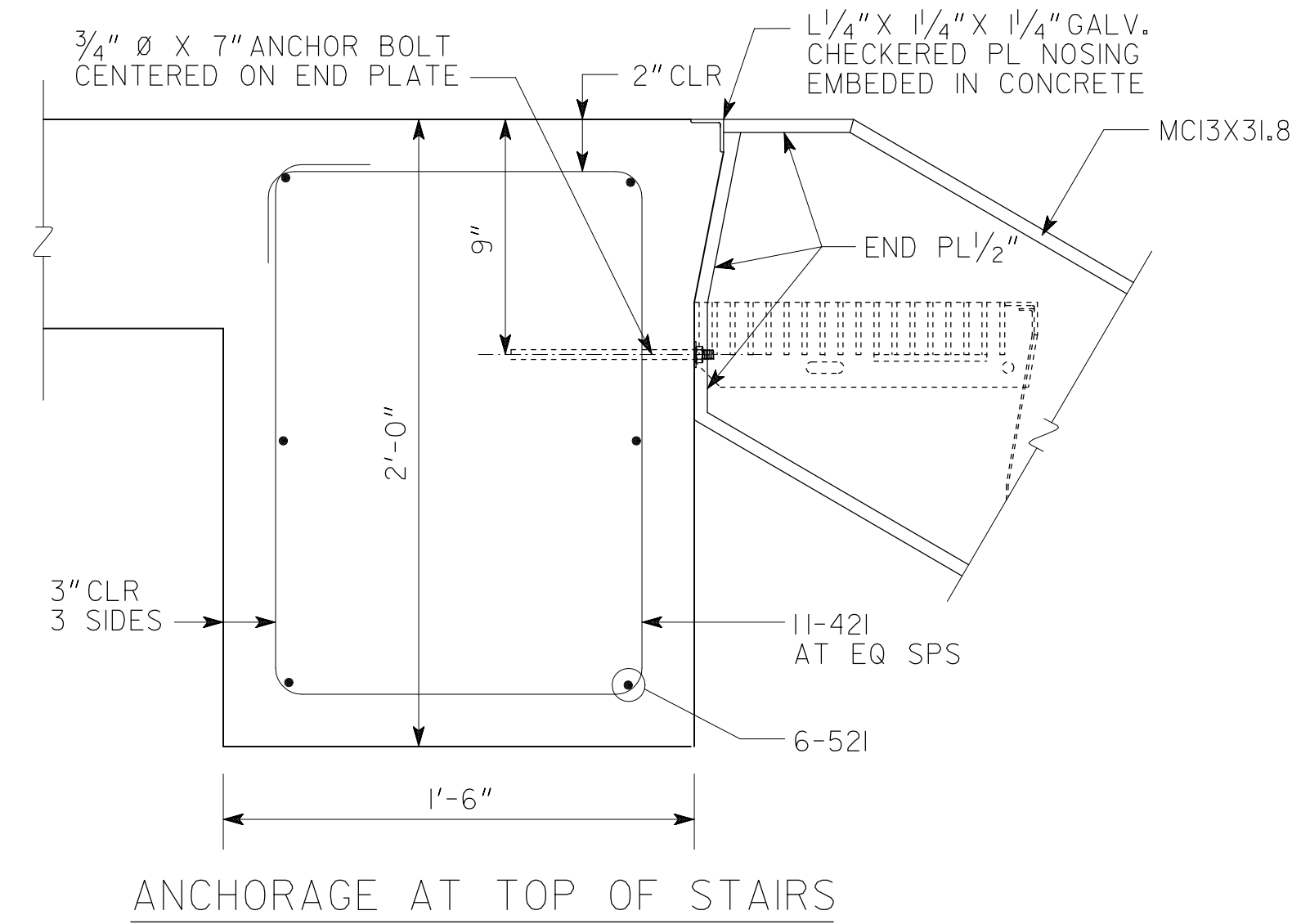
SECTION A-A



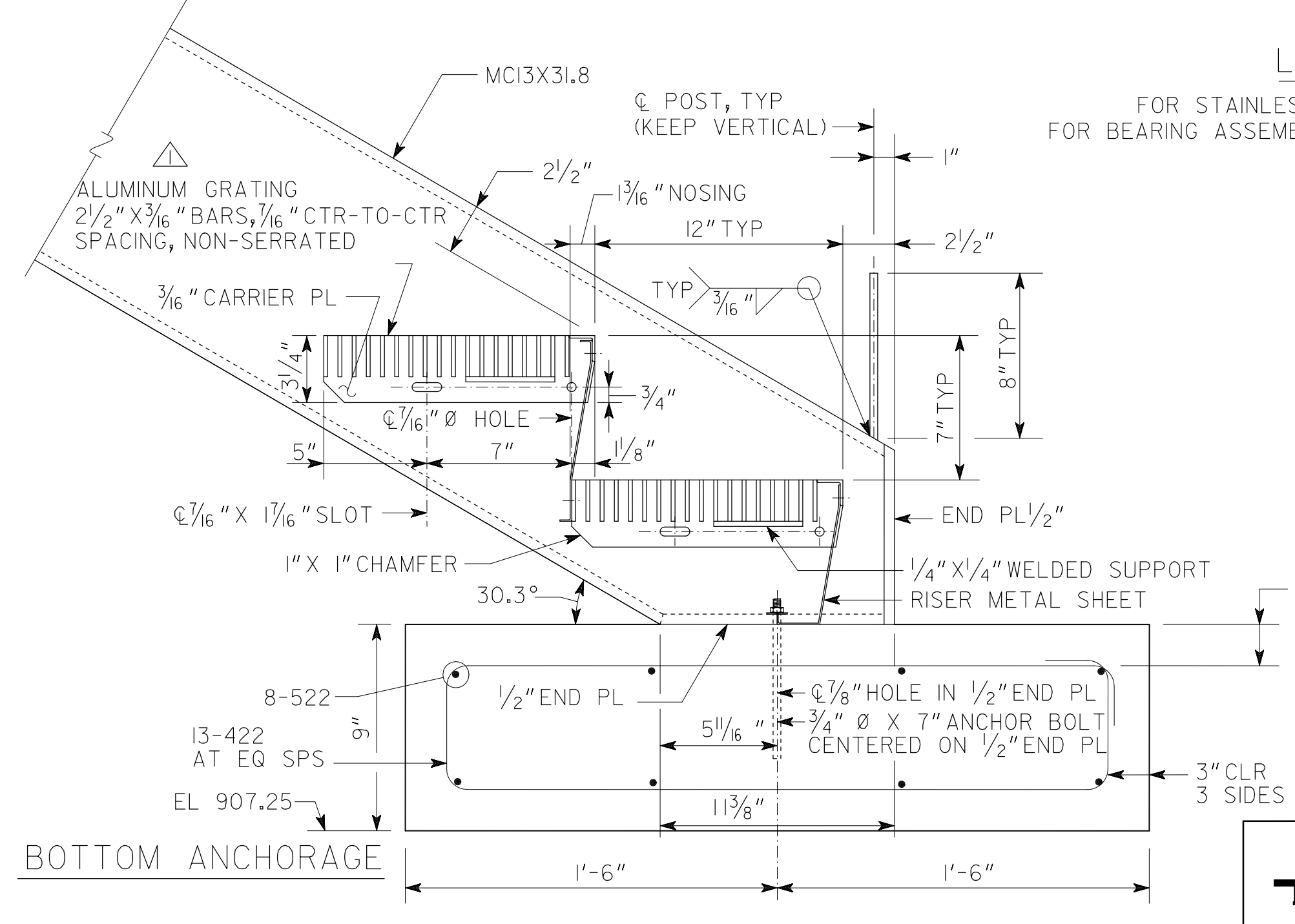
BRG. STIFFENER DETAILS



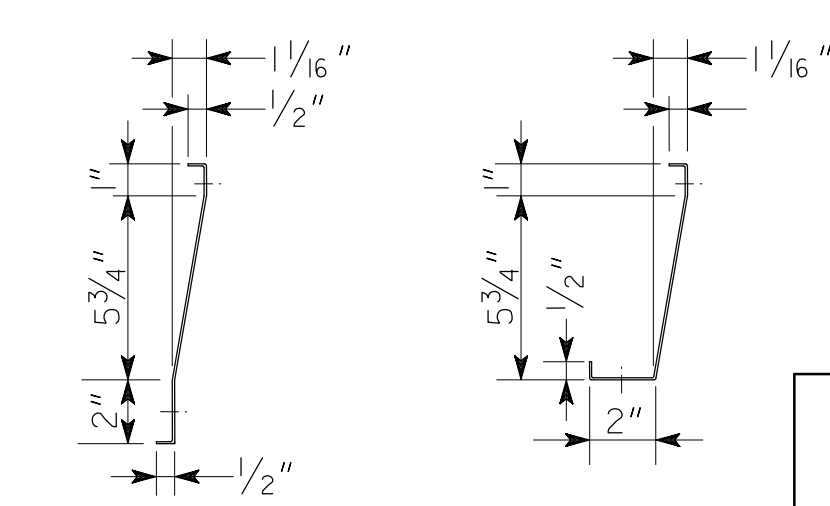
SECTION B-B



ANCHORAGE AT TOP OF STAIRS



BOTTOM ANCHORAGE



TYPICAL AT BOTTOM

RISER SHEET METALS
14 GA. GALV.

	DATE	03-11-20
	REVISIONS	
BY	REVISOR	TO
AS	REVISED STAINLESS STEEL GRATING TO ALUMINUM GRATING	
DRAWING NO. 35 - 0009 BRIDGE SHEET 9 OF 11		

S&A SASTRY & ASSOCIATES, INC.
11030 JONES BRIDGE ROAD, SUITE 201
ALPHARETTA, GA 30022
PHONE: 678-366-9375

ELEVATED WALKWAY NO. 1 AND STAIRS NO. 1		
ATLANTA BELTLINE		
STAIRS DETAILS PONCE DE LEON AVENUE/ATLANTA BELTLINE CONNECTION RAMP FULTON COUNTY		
SCALE: 1/2" = 1'-0" U. N. O.		JANUARY 2019
DESIGNED AP/UP	CHECKED AS	REVIEWED SKG
DRAWN PS	DESIGN GROUP	APPROVED WMD

1 INCH WHEN PRINTED FULL SIZE