



**Atlanta
BeltLine**

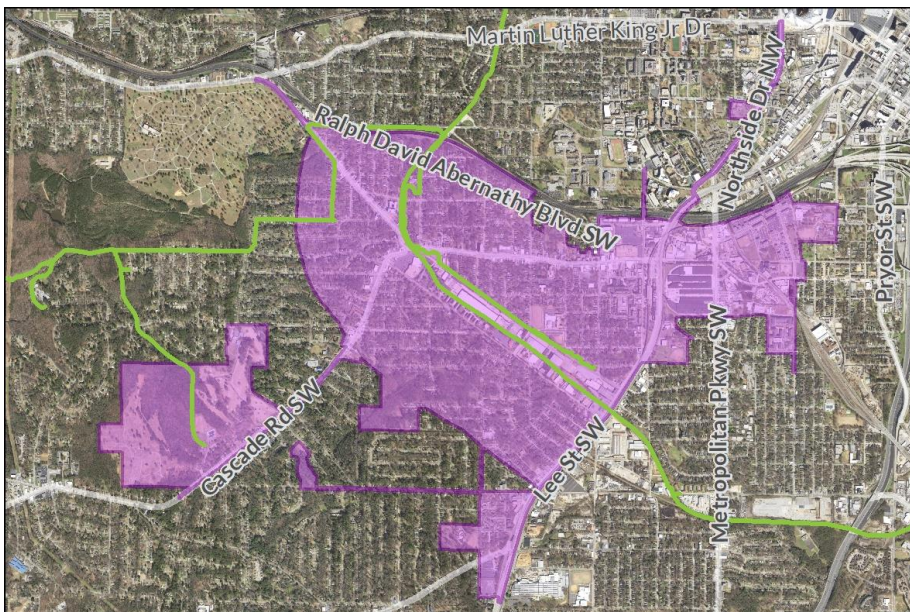
Where Atlanta Comes Together

SOUTHWEST STUDY GROUP – OPEN HOUSE FOR SUBAREA 1 MASTER PLAN

Come review the results of your input into the Subarea 1 Master Plan Update!

Atlanta BeltLine, Inc. and the City of Atlanta Planning Department teamed up to coordinate two Master Planning efforts - Atlanta BeltLine Subarea 1 and West End Livable Centers Initiative (LCI) Master Plan updates. The Subarea 1 geography includes the West End LCI area and several more neighborhoods – Westview, Adair Park, Oakland City, Bush Mountain; parts of Mechanicsville, Pittsburgh and Cascade Avenue.

There is no formal presentation. The purpose of this Open House is to share findings from previous public meetings before legislation is introduced to adopt the plan. The draft final recommendations focus on land use (e.g. mixed use, housing, commercial services), mobility (e.g. trails, sidewalks, bikes, transit), parks and greenspace in BeltLine Subarea.



DATE

Thursday, March 5, 2020

TIME

6:00-8:00pm

LOCATION

*Lee & White Street
Community Room*

ADDRESS

*1000 White St. SW, Atlanta,
GA 30310*

GETTING THERE

- ❖ This location is accessible via MARTA bus #81 and West End Station (0.7 miles). See itsmarta.com for complete bus map and schedule.
- ❖ Please consider biking or walking, if you are able.
- ❖ Free parking available on site.

FOR MORE INFORMATION:

wfuller@atlbeltline.org//404-477-3574

www.beltline.org/meetings