



**Atlanta
BeltLine**

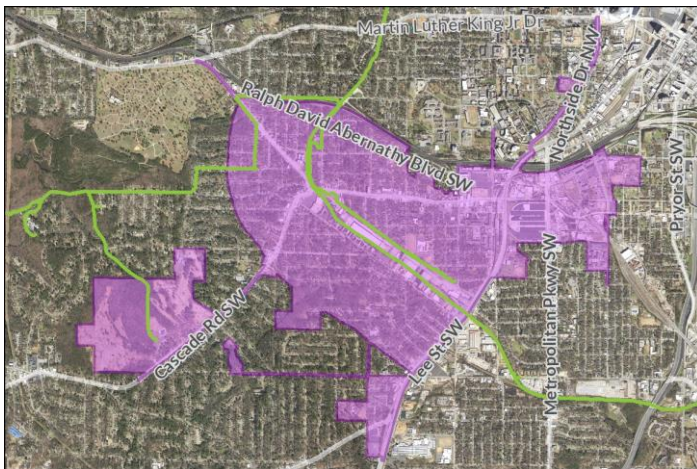
Where Atlanta Comes Together

ATLANTA BELTLINE SUBAREA 1 & WEST END LIVABLE CENTERS INITIATIVE (LCI) MASTER PLAN UPDATES

Help shape the vision for the future of your community!

Atlanta BeltLine, Inc. and the City of Atlanta Planning Department teamed up to coordinate two Master Planning efforts - Atlanta BeltLine Subarea 1 and West End Livable Centers Initiative (LCI) Master Plan updates. The Subarea 1 geography includes the West End LCI area and several more neighborhoods – Westview, Adair Park, Oakland City; parts of Mechanicsville, Pittsburgh and Cascade Avenue.

In this meeting we are seeking community input to update both Master Plans. We will be evaluating the original plan recommendations, examining existing conditions with regards to land use, zoning, mobility, greenspaces, etc. and highlighting what has occurred in the community since the Master Plans were adopted. The planning process will take place in 4 public meetings and 4 stakeholder group meetings, followed by meetings with the affected NPU's inside the subarea, and ultimately City Council approval.



DATE

Thursday, October 3, 2019

TIME

6:00-8:00pm

LOCATION

Shiloh Missionary Baptist Church

ADDRESS

*1150 Westview Dr. SW,
Atlanta, GA 30310*

GETTING THERE

- ❖ This location is accessible via MARTA bus #3 and #813. See itsmarta.com for complete bus map and schedule.
- ❖ Please consider biking or walking, if you are able.
- ❖ Free parking available on site.

FOR MORE INFORMATION:

wfuller@atlbeltline.org//404-477-3574

www.beltline.org/meetings