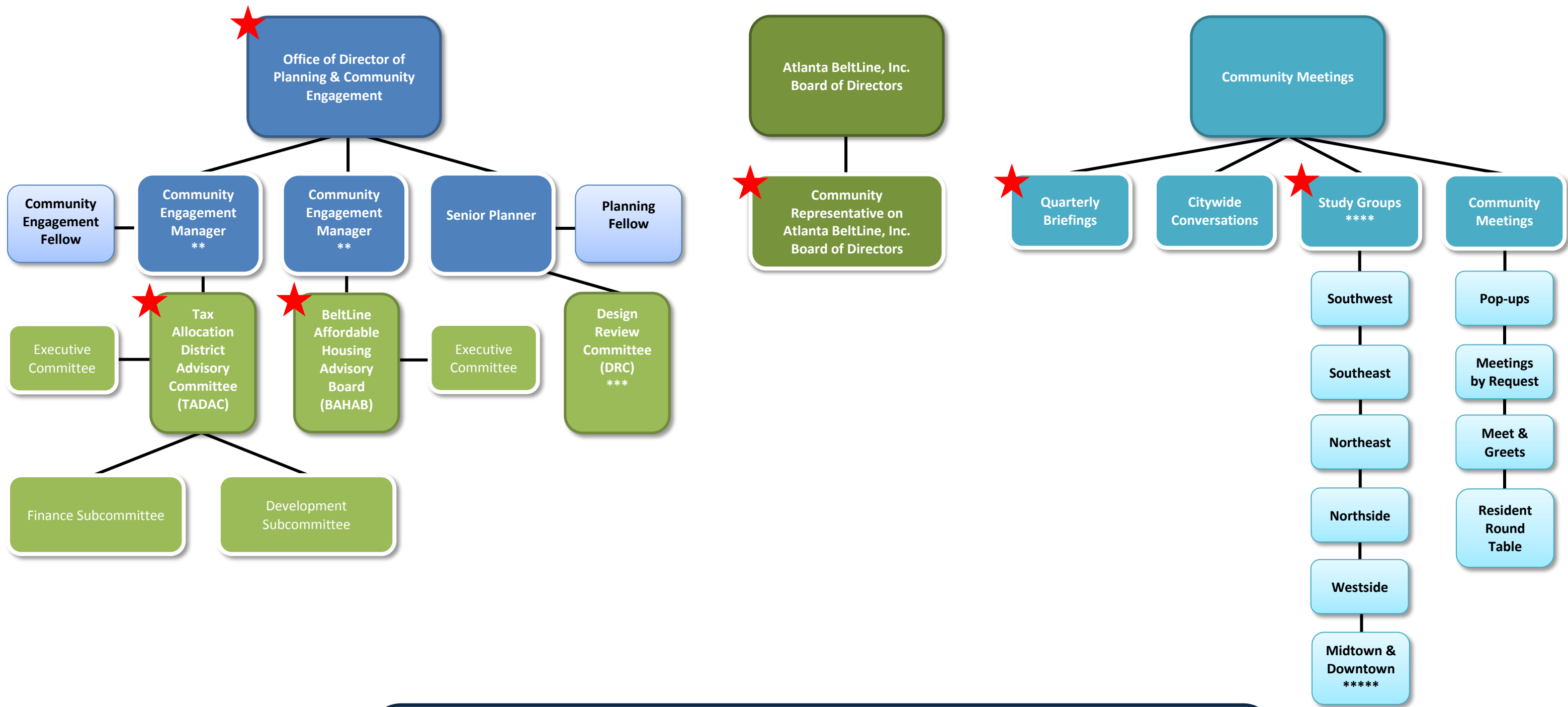


Expanded Atlanta BeltLine Planning & Community Engagement Framework*



*BeltLine Citizen Participation Framework established in Resolution 06-R-1576 is referred to as Community Engagement Framework
 **Citizen Participation Advocate established in Resolution 06-R-1576 is referred to as Community Engagement Manager
 *** Design Review Committee established in Resolution 14-R-4377
 **** Planning Units established in Resolution 06-R-1576 are referred to as Study Groups
 ***** Midtown & Downtown Study Groups held as needed for issues related to Crosstown transit routes

★ Red stars indicate community engagement methods that are legislatively mandated and are included in the original "BeltLine Citizen Participation Framework"